



## Wheel Accessory Products Catalog



# Table of Contents

## Heavy Duty Trucks - Chrome Accessories

One-Piece Hub Cover System .....	2
Alcoa Wheel Kits .....	3 - 4
Alcoa Hug-A-Lug® Nut Covers.....	5 - 6

## Heavy Duty Trucks - Maintenance

Wheel Cap Nuts (Fasteners) .....	7 - 8
Valve Stems .....	9
Valve Stem Extension Stabilizers .....	10
Valve Stem Extension Stabilizer Kits .....	11
Valve Stem Extensions .....	11
Air Chucks .....	11
Double Seal Valve Caps .....	12
Service Gauges .....	12
E-Z Mount Wheel Alignment Sleeves.....	12

## Medium and Light Duty Trucks - Wheel Accessories

Wheel Cap Nuts (Fasteners) .....	13
Two-Piece Flange Nuts .....	13
Flange Nut Covers .....	13
Alcoa Hug-A-Lug® Nut Covers.....	14
Medium Duty Nut Covers .....	14
Aluminum Axle End Covers .....	15 - 16
Wheel Hub Cover System Kit for 19.5" Wheels .....	17
Wheel Hub Cover System Kit for Medium Duty Wheels .....	18

## Alcoa Wheel Service Manual

This limited warranty should be used in conjunction with the Alcoa Wheel Service Manual. The Wheel Service Manual contains important safety information and warnings, and failure to read and understand this information may result in serious injury or death. The limited warranty is included with the Wheel Service Manual, but may appear elsewhere. If you do not have copies of the Wheel Service Manual, you may obtain copies free of charge from Alcoa Wheel Products, 1616 Harvard Avenue, Cleveland, Ohio 44105, (800) 242-9898 and on the web at [www.alcoawheels.com](http://www.alcoawheels.com).



1616 Harvard Ave.  
Cleveland, OH 44105  
800-242-9898

[www.alcoawheels.com](http://www.alcoawheels.com)

## Ordering Your Alcoa Accessories

Please place your order by calling 800-242-9898 between 9 a.m. and 5 p.m. EST.

If you have fitment questions, please call 800-242-9898, and a customer service representative will assist you with compiling your order.

## Warranty

This warranty covers all wheel accessories listed in this Accessory Products Catalog and all other wheel accessories sold and/or manufactured by Alcoa ("Wheel Accessories").

Alcoa warrants Wheel Accessories to be free from any manufacturing defects for two (2) years from the date of purchase. If a Wheel Accessory is defective at any time during the above described warranty period, the Wheel Accessory shall be returned along with the original receipt and a brief description of the defect to Alcoa Wheel and Transportation Products, 3320 Gilchrist Rd., Mogadore, Ohio 44260. Upon confirmation that the Wheel Accessory is defective, Alcoa, at its option, shall either replace the defective Wheel Accessory or issue a refund. Alcoa shall have no other liability for breach of warranty. For more information regarding warranty coverage or procedures, please call 800-242-9898 option # 1 to speak with an Alcoa representative.

This warranty is limited to the original consumer purchaser of the Wheel Accessory and expires immediately upon transfer of the Wheel Accessory to another individual or entity. Alcoa does not warrant against defects that are caused by misuse or abuse of the Wheel Accessory. ADDITIONALLY, ALCOA HEREBY DISCLAIMS ANY AND ALL IMPLIED WARRANTIES, INCLUDING, BUT NOT LIMITED TO ANY WARRANTIES OF MERCHANTABILITY OR FITNESS FOR A PARTICULAR PURPOSE. ALCOA IS NOT RESPONSIBLE FOR ANY INCIDENTAL OR CONSEQUENTIAL DAMAGES CAUSED BY THE WHEEL ACCESSORIES. Some states do not allow the exclusion or limitations of incidental or consequential damages, so the above limitations or exclusion may not apply to you. This warranty gives you specific legal rights, and you may also have other rights, which vary from state to state. Nothing in this warranty shall be construed as superseding or adding to any Alcoa warranty for truck wheels, light truck wheels, auto wheels or other products.

☼ The Starburst design is a registered Trademark of Alcoa Inc.





### One-Piece Hub Cover System for 10-Hole, 285.75mm, 22.5" and 24.5" Wheels

Part No.	Description	Wheel Type	Finish
086100S	Front Axle Kit includes: Two front covers and one removal tool. Use a short handle rubber mallet for application. Maximum stud standout 2.50".	Hub Piloted	Chrome
087100S	Rear Axle Kit includes: Two rear covers and one removal tool. Use a short handle rubber mallet for application. Maximum stud standout 2.50".	Hub Piloted	Chrome
000800	Removal Tool		

#### It's a One-Piece Wonder

- Reduces parts inventory for the dealership
- Reduces installation time: 1 part vs. 11 for fleets or owner operators
- Patented On-Off Attachment System
- On-Off Removal for hub lube and DOT inspection
- Available for Alcoa 14" wheels
- Two-year warranty







## Front Steer Wheel Hub Cover Kits for 10-Hole 22.5" and 24.5" Wheels

Part No.	Description/Application	Wheel Type	Nut Cover
076185*	Kit includes: one hub cover, 10 screw-on Hug-A-Lugs <sup>®</sup> and one wrench. Application: Cover is secured by screwing the 001851 directly onto stud threads. Maximum stud standout 2.30".	Hub Piloted	001851 33mm
076188	Kit includes: one hub cover, 10 screw-on Hug-A-Lugs <sup>®</sup> with clamps and one wrench. Application: Cover is secured by screwing the 001881 onto inner clamp. Inner clamp is placed on hex nut. Maximum stud standout 2.32".	Hub Piloted	001881 33mm

\* Requires a minimum of 4 threads per stud, 6 recommended.

For technical assistance with identifying the correct product for your heavy duty truck, call 800.242.9898

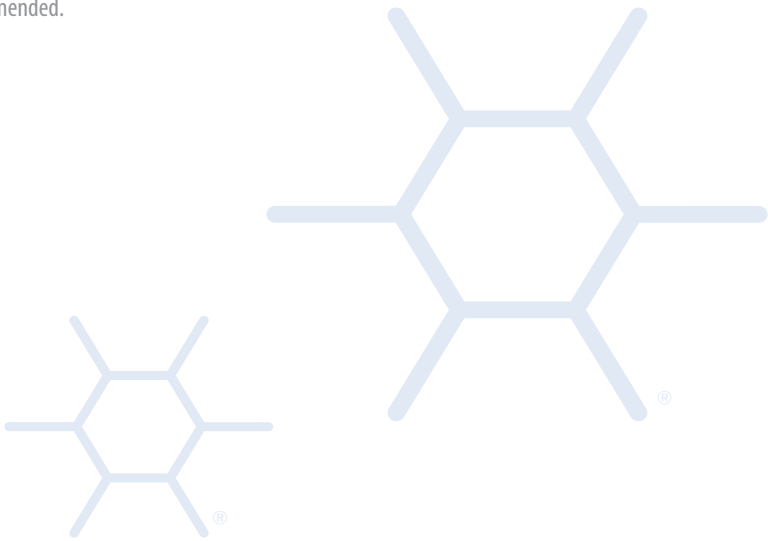




### Rear Drive Wheel Cover Kits for 10-Hole 22.5" and 24.5" Wheels

Part No.	Description/Application	Wheel Type	Nut Cover
077185*	Kit includes: one hub cover, 10 screw-on Hug-A-Lugs® and one wrench. Application: Cover is secured by screwing the 001851 directly onto stud threads. Maximum stud standout 2.30".	Hub Piloted	001851 33mm
077188	Kit includes: one hub cover, 10 screw-on Hug-A-Lugs® with clamps and one wrench. Application: Cover is secured by screwing the 001881 onto inner clamp. Inner clamp is placed on hex nut. Maximum stud standout 2.32".	Hub Piloted	001881 33mm

\* Requires a minimum of 4 threads per stud, 6 recommended.





## Hub Covers

Part No.	Description	Finish
076100	Front Axle Cover for Interlocking Hub Cover System	Chrome
077100	Rear Axle Cover for Interlocking Hub Cover System	Chrome

## Hub Cover System Cap Nut Cover Wrenches

Part No.	Part No.	Description
Single	Shelf Pack (5)	
000500	000500SP	Cap Nut Cover Wrench for Ball Seat Hug-A-Lugs®
000600	000600SP	Cap Nut Cover Wrench for Hub Piloted Hug-A-Lugs®



## Hug-A-Lug® Nut Covers for 33mm Hex Two-Piece Flange Nuts (Hub-Pilot Wheels)

Part No.	Description	For Nut Heights	Maximum Stud Standout	Finish
001851	For 33mm Hex Two-Piece Flange Nut for Trucks (screw-on)	27-31mm	2.30"	Chrome
001881	For 33mm Hex Two-Piece Flange Nut for Trucks with clamps	27-31mm	2.32"	Chrome
000188	Black Interlocking Clamp (replacement)	27-31mm		Black
000888	Off White Interlocking Clamp (replacement)	27-31mm		Off White

## Hug-A-Lug® Nut Covers for 1.5" Hex Nut (Ball-Seat, Stud Located Wheels)

Part No.	Description	Maximum Stud Standout	Finish
001551	For 1.5" Hex Ball Seat Nut, with clamps	1.91"	Chrome
000155	White Interlocking Clamps (replacements)		White
000555	Gray Interlocking Clamps (replacements)		Gray



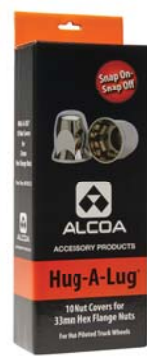
### Hug-A-Lug® Nut Covers for 1.5" Hex Nut (Ball-Seat, Stud Located Wheels)

001501



Part No.	Part No.	Description	Maximum Stud Standout	Finish
Single	Display Pack (10)			
001501	001503	For 1.5" Hex Stud-pilot Nut	1.87"	Chrome

### Hug-A-Lug® Two-Piece Nut Covers for 33mm Hex Flange Nuts (Hub-Pilot Wheels)



001801

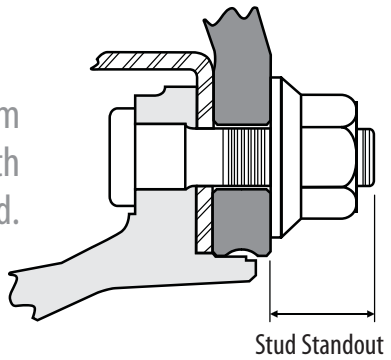


Part No.	Part No.	Part No.	Description	Maximum Stud Standout	For Nut Heights	Finish
Single	Shelf Pack (10)	Display Pack (10)				
001801	001802	—	For 33mm Hex Flange Nut for Buses	1.95"	.886" - 1.0"	Chrome
001811	001812	001813	For 33mm Hex Flange Nut for Trucks	1.95"	27-31mm	Chrome

### Hug-A-Lug® Nut Covers for 1.5" Hex Two-Piece Flange Nuts (Hub-Pilot Wheels)

Part No.	Part No.	Description	Maximum Stud Standout	For Nut Heights	Finish
Single	Shelf Pack (10)				
001821	001822	For 1.5" Hex Flange Nut for Trucks	2.20"	1.4375"	Chrome
001831	001832	For 1.5" Hex Flange Nut for Buses	2.20"	.875"	Chrome

Stud standout is the distance from the wheel to the end of the stud with the wheel securely mounted.

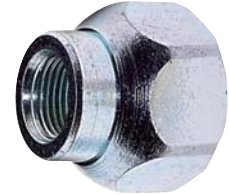


## Wheel Cap Nuts (Fasteners)

### Outer Cap Nuts (Ball Seat Wheels)

Part No.	Description	Kit (contains 6 each of)
499100	Complete truck kit – metric medium duty aluminum wheel ball seat mounting kit – M20/1.5 stud thread size, dual aluminum rear wheels kit	499211 left cap nut front, 499222 right cap nut front, 499331 left inner cap nut rear, 499342 right inner cap nut rear, 499451 left cap nut rear, 499462 right cap nut rear

Part No.	Part No.	Thread Direction	Description
<b>Single</b>	<b>Shelf Pack (10)</b>		
499211	499211SP	Left	M20x1.5 cap nut – mounts front single ball seat wheels.
499222	499222SP	Right	
599501 (5995L)	599501SP	Left	3/4" x 16 cap nut – mounts standard single wheels and wide base wheels to 3/4" studs.
599502 (5995R)	599502SP	Right	



599502 (5995R)

Part No.	Part No.	Thread Direction	Description
<b>Single</b>	<b>Shelf Pack (10)</b>		
499451	499451SP	Left	M30x1.5 – mounts double ball seat aluminum wheels in conjunction with inner cap nut, secures outer dual.
499462	499462SP	Right	
599601 (5996L)	599601SP	Left	1 1/8" x 16 cap nut – mounts standard single wheels and wide base wheels to 1 1/8" studs and provides additional 1/8" hex height. Also mounts outer dual wheel to 1 1/8" inner cap nut.
599602 (5996R)	599602SP	Right	



599601 (5996L)

### Inner Cap Nuts (Ball Seat Wheels)

Part No.	Part No.	Thread Direction	Description
<b>Single</b>	<b>Shelf Pack (10)</b>		
499331	499331SP	Left	M20/M30x1.5 – for use with dual aluminum ball seat wheels. Secures inner dual in conjunction with outer cap nut.
499342	499342SP	Right	
598801 (5988L)	598801SP	Left	For use with standard length studs (1.31" to 1.44" stud standout) or longer studs not to exceed 1.88" stud standout. Full external threads, counter bore 5/16" deep at open end. For use with aluminum inner and outer wheels. Prevents stud from bottoming out in cap nut.
598802 (5988R)	598802SP	Right	



598801 (5988L)



## Wheel Cap Nuts (Fasteners) Outer Cap Nuts (For Two-Piece Flange Nuts - Hub Piloted Wheels)

Part No.	Part No.	Description
<b>Single</b>	<b>Shelf Pack (10)</b>	
039874	039874SP	Two-piece, 26.25mm height, 33mm hex, M22 x 1.5mm, RH thread flange nut. Mounts single and dual aluminum wheels with 26mm bolt holes to wheel centering hubs. Right-hand threads used on both sides of vehicle.



Part No.	Part No.	Description
<b>Single</b>	<b>Shelf Pack (10)</b>	
430632	430632SP	Two-piece, 50mm height, 33mm hex, M22 x 1.5mm, RH thread, sleeved cap nut. Mounts single aluminum wheels, with 32mm bolt holes, to wheel centering hubs with stud standouts less than 1.71" (43.5mm). Right-hand threads used on both sides of vehicle.



Part No.	Part No.	Description
<b>Single</b>	<b>Shelf Pack (10)</b>	
430732	430732SP	Two-piece, 78.5mm height, 33mm hex, M22 x 1.5mm, RH thread, sleeved cap nut. Mounts dual aluminum wheels, with 32mm bolt holes, to wheel centering hubs with stud standouts less than 2.85" (72mm). Right-hand threads used on both sides of vehicle.



Part No.	Part No.	Description
<b>Single</b>	<b>Shelf Pack (10)</b>	
578632	578632SP	Dacromet coated. Two-piece, 50mm height, 33mm hex, M22 x 1.5mm, RH thread, sleeved cap nut. Mounts single aluminum wheels, with 32mm bolt holes, to wheel centering hubs with stud standouts less than 1.71" (43.5mm). Right-hand threads used on both sides of vehicle.
578732	578732SP	Dacromet coated. Two-piece, 78.5mm height, 33mm hex, M22 x 1.5mm, RH thread, sleeved cap nut. Mounts dual aluminum wheels, with 32mm bolt holes, to wheel centering hubs with stud standouts less than 2.85" (72mm). Right-hand threads used on both sides of vehicle.



578732

Refer to Alcoa Wheel Service Manual for minimum stud standouts for single and dual wheel applications.



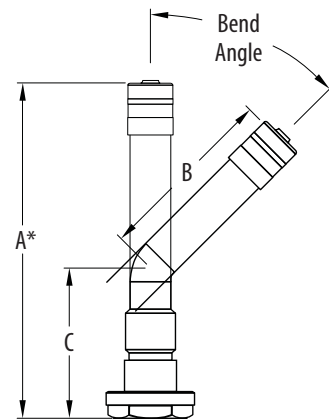
## Grommet Seal Valve Stems

Part No.	Valve No.	A or C Height	Bend Angle	B Length
005520	552	1.26"	—	—
005530	553	2.31"	—	—
005533	553C	.93"	45°	1.38"
005535	553E	.98"	75°	1.38"
005544	554D	.98"	60°	1.94"
005554	555D	.98"	60°	2.6"
005555	555E	.98"	75°	2.6"
006027	60MS27	1.05"	27°	1.19"
007007	70MS07	1.59"	7°	1.12"

### Grommet Seal Valve Stem Features:



- Longer Sealing Life
- Greater Corrosion Resistance
- Larger Sealing Surface
- Grommet has Better Temperature Range and Tear Resistance



\* Height A is used in place of C when valve stem has no bend angle.

See Alcoa Spec Data Guide for full application list on Alcoa Aluminum Wheels.



### If it's not an Alcoa aluminum wheel, it's just an aluminum wheel.

- Alcoa invented aluminum wheels over 65 years ago.
- Alcoa controls the whole production process – from mining through refining, smelting, forging and machining.
- We offer a complete product line for the industry.
- We have a global presence and are in standard position on more OEMs than any other brand.
- We have a proprietary one-piece forging process that creates wheels strong enough for M-1 tanks, 747 jets, and your fleet.

## Valve Stem Extension Stabilizers

**Part No. ULTRASTB**  
**Part No. ULTRASTBSP (Shelf Pack 8)**



Fits wheel size: 22.5"  
 For Ultra ONE™ Wheel with MagnaForce™ alloy  
 Hand Hole Diameter: 2.6"  
 Hole Position: Off-Center

**Part No. 002125**



Fits wheel size: 19.5"  
 Hand Hole Diameter: 1.50"  
 Hole Position: Center

**Part No. 002126**



Fits wheel size: 19.5"  
 Hand Hole Diameter: 1.50"  
 Hole Position: Off-Center

**Part No. 002127**



Fits wheel size: 22.5 x 9.0  
 Hand Hole Diameter: 1.50"  
 Hole Position: Center

**Part No. 002225**



Fits wheel size: 22.5"  
 Hand Hole Diameter: 2.00"  
 Hole Position: Center

**Part No. 002227**



Fits wheel size: 22.5"  
 Hand Hole Diameter: 2.50"  
 Hole Position: Center

**Part No. 002245**



Fits wheel size: 24.5"  
 Hand Hole Diameter: 2.19"  
 Hole Position: Off-Center

**Part No. 002247**  
**Part No. 002247SP (Shelf Pack 10)**



Fits wheel size: 24.5"  
 Hand Hole Diameter: 2.375"  
 Hole Position: Off-Center

**Part No. 002248**



Fits wheel size:  
 Freightliner Stylized  
 Hand Hole Diameter: 1 5/16" x 3.5"  
 Hole Position: Off-Center

**Part No. 008864**  
**Part No. 008864SP (Shelf Pack 8)**



Fits wheel size: 22.5" & 24.5"  
 For 88367x, 88364x, 98364x  
 Hand Hole Diameter: 2.50"  
 Hole Position: Off-Center

**Part No. 008964**  
**Part No. 008964SP (Shelf Pack 8)**



Fits wheel size: Prevost  
 Hand Hole Diameter: 2.00"  
 Hole Position: Off-Center

**Part No. 027245**  
**Part No. 027245SP (Shelf Pack 8)**



Fits wheel size: 24.5"  
 For 98367x  
 Hand Hole Diameter: 2.70"  
 Hole Position: Off-Center



864392

## Valve Stem Extension Stabilizer Kits

Part No.	Description	Stabilizer (2)	Extensions (2)
ULTRAKT	For 22.5" Ultra ONE™ wheels with 2.6" diameter hand hole, valve stem diameter 0.33", off-center hole	ULTRASTB	000392
225392	For 22.5" wheels with 2.00" diameter hand hole, valve stem diameter 0.33", center hole	002225	000392
227392	For 22.5" wheels with 2.50" diameter hand hole, valve stem diameter 0.33", center hole	002227	000392
864392	For 88367X with 2.50" diameter hand hole, valve stem diameter 0.33", off-center hole	008864	000392
927245	For 98367X wheels with 2.50" diameter hand hole, valve stem diameter 0.33", off-center hole	027245	000392
927255	Kit for 98367X wheels with 2.50" diameter hand hole, valve stem diameter 0.33", off-center hole	027245 (10)	000392 (10)



000392

## Valve Stem Extensions

Part No.	Part No.	Description	Collar Type	Effective Length
<b>Single</b>	<b>Shelf Pack (10)</b>			
000352	000352SP	Valve Stem Extension (Plastic)	Long 1"	5.21"
000392	000392SP	Valve Stem Extension (Metal)	Long 1"	5.125"

Adding air to the inside wheel when you have dual applications can be a real struggle - unless you know about Alcoa's valve stem extensions and stabilizers. These unique products are what smart drivers use to make this job a snap. The extension is supported by a soft yet stable grommet that fits snugly into the hand hole so that, when you need to check the pressure or add air, it's as easy to do on the inside positions as on the outside tires. Stop fighting with your dualies, and get genuine Alcoa valve stem extensions and stabilizers.



003700



003500

## Air Chucks

Part No.	Description
003500	Design offers durability and is user friendly on the straight-on and 30° reverse angle chuck. This 6" long chuck finished with an attractive black polyurethane coating has 1/4" NPT female threads.
003700	A special air chuck with a straight-on connection and a 180° reverse chuck allows easier access to valves located in tight, hard-to-reach places. The 003700 is 6" long and has 1/4" NPT female threads.



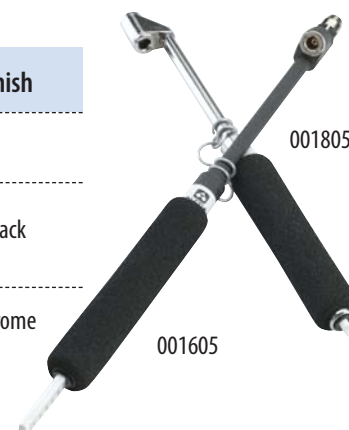


## Valve Caps

Part No.	Part No.	Description
<b>Single</b>	<b>Shelf Pack (10)</b>	
001009	001009SP	Double seal valve cap seals at the top of the cap which prevents dirt and water from penetrating the cap, eliminating the chances of clogged air passages due to ice and debris. Allows for inflation and deflation of the tire without removing the cap. A great time saver.
000633	–	Valve cap remover makes it easy to remove and install valve caps on inside dual wheels. Designed for aluminum wheels with small hand holes, it comes with a protective sleeve to prevent scratching. Also works great at removing tight or cross-threaded caps. Positive hold while valve is serviced. Keeps cap in tool.

## Service Gauges

Part No.	Part No.	Calibration	Incre.	Bar	Chuck Style	Finish
<b>Single</b>	<b>Shelf Pack (5)</b>					
001605	001605SP	10-150 PSI	2 PSI	Nylon 30° reverse	Straight-on	Black
001805	–	10-150 PSI	2 PSI	Nylon 180° reverse	Straight-on	Chrome



The grip on these gauges allows a positive grip during inclement weather conditions and serves as a protective cushion should the gauge be inadvertently dropped. Can be used on all dual foot truck service gauges.

## E-Z Mount Wheel Alignment Sleeves

(For Steer, Drive and all Trailer Axle Applications with a 22mm Diameter Stud)

Part No.	Description
000426	Individual Wheel Alignment Sleeves
407422	Wheel Alignment Sleeve Kit (2 sleeves)



## Wheel Cap Nuts (Fasteners) 60° Cone Seat Cap Nuts (For Stud Located 16"x7" Wheels)

Part No.	Part No.	Thread Size	Hex	Torque
<b>Single</b>	<b>Shelf Pack (10)</b>			
005014	005014SP	M14 x 1.5mm	7/8"	100 - 110 ft. lbs.
005916	005916SP	9/16" x 20 tpi	7/8"	120 - 140 ft. lbs.



005014

Each lug nut has specific inner threads for each application with universal outside threads to accept the Alcoa chrome-plated nut cover.  
(See Hug-A-Lug® Part Nos. 000078 and 000079)

## Two-Piece Flange Nuts (For Hub Piloted 16"x6" Wheels & some RV Wheels)

Part No.	Part No.	Thread Size	Hex	Torque
<b>Single</b>	<b>Shelf Pack (10)</b>			
139698	139698SP	M14 x 1.5mm (internal thread)	1.050"	140 ft. lbs.
139987	139987SP	9/16" x 18 tpi (internal thread)	1.050"	140 ft. lbs.



139698

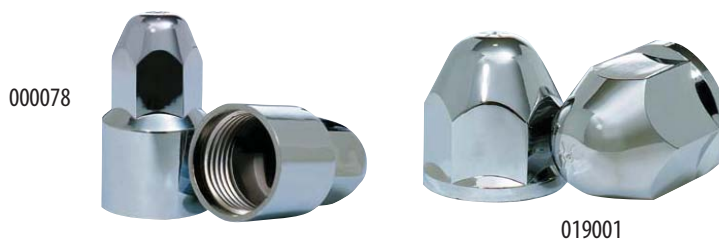
Each lug nut has specific inner threads for each application and common hex head to accept the Alcoa chrome-plated nut cover.  
(See Hug-A-Lug® Part No. 019001)

## Flange Nut Covers

Part No.	Description	Thread Size
000200	30mm Hex Flange Nut	M20 x 1.5"
000220	33mm Hex Flange Nut	M22 x 1.5"



Requires a minimum of 3 threads protruding through lug nut.  
Black spacer not applicable with short lug nut.



### Hug-A-Lug® Nut Covers (For 16" and 19.5" Wheels)

Part No.	Description	For Heights	Fits Nut	Finish
000078*	2.125" Tall	.96"	60° Cone	Chrome
000079*	1.525" Tall	.96"	60° Cone	Chrome
019001**	Hug-A-Lug®	1 1/16"	2-Piece Flange	Chrome

\* Fits Alcoa Part No. xx5xxx Nuts

\*\* Fits Alcoa Part No. x39xxx Nuts

### Medium Duty Nut Covers

Part No.	Description	Finish
000120	For use with 6", 6-lug Hub Piloted, 205mm Bolt Circle	Chrome
000230	For use with medium duty trucks with 19.5", 8-lug wheels and 30mm hex	Stainless Steel
000233	For use with medium duty trucks with 19.5", 8-lug wheels and 33mm hex	Stainless Steel



000120

Forged  
Strength.



## Aluminum Axle End Covers

**Part No. 001611\***



Height: 1.125" straight  
For Dodge/Ford dualie applications  
Bolt Pattern: 8 x 6.50

**Part No. 001612\***



Height: 4.750" straight  
For Dodge/Ford dualie applications  
Bolt Pattern: 8 x 6.50

**Part No. 001613\***



Height: 3.50" straight  
For Dodge/Ford dualie applications  
Bolt Pattern: 8 x 6.50

**Part No. 001681\***



Height: 4.750" straight with  
3.50" open end  
For Dodge/Ford dualie applications  
Bolt Pattern: 8 x 6.50

**Part No. 003167**



Height: 4.700" straight  
Hub bores: 5.150"  
Bolt Pattern: 8 x 6.50

**Part No. 003611\***



Height: 1.125" straight  
For Chevy dualie applications  
Bolt Pattern: 8 x 6.50

**Part No. 003612\***



Height: 4.750" straight  
For Chevy dualie applications  
Bolt Pattern: 8 x 6.50

**Part No. 003613\***



Height: 3.50" straight  
For Chevy dualie applications  
Bolt Pattern: 8 x 6.50

**Part No. 004167**



Height: 4.000" straight  
Hub bores: 5.150"  
Bolt Pattern: 8 x 6.50

\* Mounts from the front



## Aluminum Axle End Covers

Part No. 005267



Height: 2.000" straight  
Hub bores: 4.250"  
Bolt Pattern: 5 x 5.50 & 8 x 6.50

Part No. 008167



Height: 4.650" straight with  
4.500" open end  
Hub bores: 5.150"  
Bolt Pattern: 8 x 6.50

Part No. 009267



Height: 2.00" straight  
Hub bores: 3.295"  
Bolt Patterns: 5 x 4.50,  
5 x 4.75, 5 x 5.50 & 6 x 5.50

Part No. 011911\*



Height: 1.63" straight  
Hub bores: 5.250" & 5.460"  
Bolt Pattern: 10 x 7.25

Part No. 011912\*



Height: 5.53" straight  
Hub bores: 5.250" & 5.460"  
Bolt Pattern: 10 x 7.25

Part No. 021000\*



Height: .750" straight  
Hub bores: 6.343"  
Bolt Pattern: 6 x 205mm

Part No. 022000\*



Height: 3.937" straight  
Hub bores: 6.343"  
Bolt Pattern: 6 x 205mm

## Axle End Cover Kits for 16028x Wheels

Part No.	Description	Package Includes
110413	Front hub cover kit	2- (001611) Axle end covers, 16 - (019001) Hug-A-Lug® nut covers
110414	Front hub cover kit	2- (001681) Axle end covers, 16 - (019001) Hug-A-Lug® nut covers
110416	Rear hub cover kit	2- (001612) Axle end covers, 16 - (019001) Hug-A-Lug® nut covers

001102



001103



## Wheel Hub Cover System Kit for 19.5" Wheels

Part No.	Description	Bolt Circle	Package Includes
001004*	Chrome plated plastic cover for 19.5" x 6" Hub Piloted wheels, fits 10-lug, for Ford F450 and F550.	10 x 225mm	1 Front
001005*	Chrome plated plastic cover for 19.5" x 6" Hub Piloted wheels, fits 10-lug, for Ford F450 and F550.	10 x 225mm	1 Rear
100450*	Chrome plated plastic hub cover kit for 19.5" x 6" hub piloted wheels, fits 10-lug, for Ford F450 and F550.	10 x 225mm	2 Fronts (001004), 2 Rears (001005)
001102*	Chrome plated plastic cover for 19.5" x 6" Hub Piloted wheels, fits 8-lug, for Ford F450 and F550.	8 x 225mm	1 Front
001103*	Chrome plated plastic cover for 19.5" x 6" Hub Piloted wheels, fits 8-lug, for Ford F450 and F550.	8 x 225mm	1 Rear
110203*	Chrome plated plastic cover for 19.5" x 6" Hub Piloted wheels, fits 8-lug, for Ford F450 and F550.	8 x 225mm	2 Fronts (001102), 2 Rears (001103)
001402	Stainless steel front cover for medium duty trucks with 19.5", 8-lug wheels and 33mm hex.	8 x 275mm	1 Front
140230B	Stainless steel front wheel kit for medium duty trucks with 19.5", 8-lug wheels and 30mm hex	8 x 275mm	2 Fronts (001402), and 16 Nut Covers (00230)
140233	Stainless steel front wheel kit for medium duty trucks with 19.5", 8-lug wheels and 33mm hex	8 x 275mm	2 Fronts (001402), and 32 Nut Covers (00233)
140233A	Stainless steel front wheel kit for medium duty trucks with 19.5", 8-lug wheels and 33mm hex	8 x 275mm	2 Fronts (001402), and 16 Nut Covers (00233)
001109	Stainless steel rear hub cover kit for medium duty trucks with 19.5", 8-lug wheels and 33mm hex.	8 x 275mm	1 Rear, 1 Bolt (001763), 1 Bracket (001834)
109176	Stainless steel wheel rear kit for medium duty trucks with 19.5", 8-lug wheels and 33mm hex.	8 x 275mm	2 Rears (001109)
109176A	Stainless steel rear wheel kit for medium duty trucks with 19.5", 8-lug wheels and 33mm hex.	8 x 275mm	2 Rears (001109), and 16 Nut Covers (00233)
109176B	Stainless steel rear wheel kit for medium duty trucks with 19.5", 8-lug wheels and 30mm hex	8 x 275mm	2 Rears (001109), and 16 Nut Covers (00230)

\* Application: Snaps on over lugnuts and center hub.



## Wheel Hub Cover System Kit for Medium Duty Trucks, Buses and Trailers

Part No.	Description	Bolt Circle	Package Includes
021120	Chrome/stainless steel front wheel kit. Place over hub and secure with nut cover.	6 x 205mm	2 (021000) 12 lug nut covers (000120)
022120	Chrome/stainless steel rear wheel kit. Place over hub and secure with nut cover.	6 x 205mm	2 (022000) 12 lug nut covers (000120)



008201	Front hub cover kit for 30mm hex flange nuts	8 x 275mm	1 front hub cover, 8 lug nut covers (000220)
008202	Rear hub cover kit for 30mm hex flange nuts	8 x 275mm	1 rear hub cover, 8 lug nut covers (000200)
082012	For 30mm hex flange nuts. Screw on cap.	8 x 275mm	2-008201, 2-008202 32-000200
008221	Front hub cover kit for 33mm hex flange nuts. Screw on cap.	8 x 275mm	1 front hub cover, 8 lug nut covers (000220)
008222	Rear hub cover kit for 33mm hex flange nuts. Screw on cap.	8 x 275mm	1 rear hub cover, 8 lug nut covers (000220)
082122	For 33mm hex flange nuts; steers	8 x 275mm	2-008221, 16-000220
082133	For 33mm hex flange nuts; drivers	8 x 275mm	2-008222, 16-000220



**ALCOA**

Alcoa Wheel and Transportation Products

1616 Harvard Ave.

Cleveland, OH 44105

(800) 242-9898

[www.alcoawheels.com](http://www.alcoawheels.com)

© 2015 Alcoa Inc.

Edition D

